



SERIES 01 LPGAS SOLENOID VALVE

The VALTEK Series 01 LP Gas Shut Off Device is a sturdy, compact and reliable unit. It takes up little space and its design provides some extremely ingenious technical advances not found in any other brand of LPGas Solenoid Valve. Features include:

1. NBR seals to guarantee absolute safety.
2. High thermal induction coil wire to render its working life virtually unlimited.
3. Self extinguishing UL94VO coil covering resin which enables it to operate at temperatures well in excess of 150°C.
4. Gas filter element made of a fine porous filter paper to ensure extremely long filter life.
5. Vibration resistant and self seating fluoroelastomer VITON sealing disc to ensure effective operation irrespective of its installation position.
6. Multiple fitting positions due to rotating pipe connectors.

INSTALLATION INSTRUCTIONS

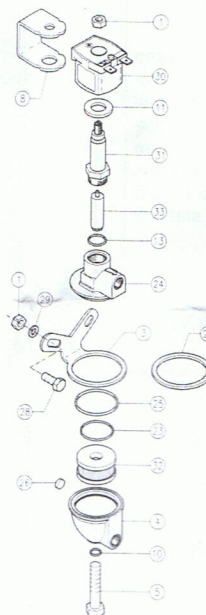
Locate and fix the LPGas solenoid valve in the engine compartment away from extreme heat source (ie. away from exhaust manifold or exhaust pipe), and as close as possible to the LPGas convertor utilising the mounting bracket and bolts provided.

It may be attached directly to the convertor, however you must ensure that it is adequately supported. The liquid flow directions must be adhered to, and power to energise the solenoid valve coming from the power output terminal of the Fuel Lock Control (Safety Switch).

MAINTENANCE INSTRUCTIONS

1. Close the manual service tap at the gas tank subcompartment.
2. Disconnect the gas service lines and remove the solenoid valve.
3. Dismantle the valve by unscrewing the plunger housing spool assembly. (31) (1)
4. Unscrew the filter bowl retaining bolt and remove the filter bowl. (5)
5. Remove the filter assembly and thoroughly clean the filter bowl and the valve main body to which the spool and coil assembly is attached. Please note: DO NOT submerge the induction coil in cleaning solvent or water.
6. Blow clean all components with compressed air and reassemble the solenoid valve using new sealing rings and filter. Tension the filter bowl retaining bolt and the plunger housing spool to specified tensions as indicated in the Torque Table.

EXPLODED VIEW AND COMPONENT PART DESCRIPTION



N.	Description	code
1	NUT M6 UNI 5588	00.151.01
3	FIXING BRACKET	01.780.03
4	FILTER CHAMBER 1/8"-27 NPTF	01.905.01
	FILTER CHAMBER M10X1	01.905.02
5	SCREW M8 x 40	01.918.03
8	COIL ARMATURE	01.030.02
10	O-RING Ø 7,5x1,5 205-740	00.010.01
11	COIL DISK	01.175.01
13	O-RING Ø 12,4x1,78 200-014	00.010.02
23	O-RING Ø 26,7x1,78 200-023	00.010.12
24	VALVE BODY 1/8"-27 NPTF	01.120.01
	VALVE BODY M10X1	01.120.03
25	O-RING Ø 34,6x2,62 200-126	00.010.03
26	PERMANENT MAGNET	01.455.01
27	SPACER RING	01.010.04
28	SCREW M6 x 12 UNI 5739	00.920.03
29	WASHER Ø 6	00.685.01
30	COMPLETE COIL 12V WITHOUT DIODE	01.065.01
	COMPLETE COIL 12V WITH DIODE	01.065.08
31	COMPLETE COIL HOUSING	01.103.01
32	LPG FILTER	01.270.01
33	COMPLETE PLUNGER	01.548.02

TORQUE TABLE

For correct Solenoid Valve fitting it is essential that you adhere to the tightening torque of the screws.

Coil Retaining Nut: NUT M6 (1)
spanner 10 hex nut
max. 7,85 Nm (70 in. Lbs)

Plunger Housing: M15 x 1,25 (31)
spanner 17 hex nut
max. 16,6 Nm (147 in. Lbs)

Bowl Retaining Bolt: VTE M8 x 40 (5)
spanner 13 hex nut
min. 16,5 Nm - max. 18 Nm (104 in. Lbs)

To ensure lifelong service of the VALTEK Series 01 LPGas Solenoid Valve, it is essential that the installer respects all installation and maintenance procedures outlined on this information sheet. Non-compliance with these installation and maintenance instructions may cause functional defects or damage to the product, for which VALTEK will not assume any responsibility.